

SCHEMATIC AND SMALL PARTS

STUMPJUMPER ALLOY

Mountain Bike



CONTENTS

1. SYMBOLS LEGEND	1
2. GENERAL INFORMATION	1
2.1. REQUIRED TOOLS	1
2.2. WEIGHT LIMITS	1
2.3. COMPONENT COMPATIBILITY	2
2.4. SEATPOST MIN / MAX INSERTION	2
2.5. COIL SHOCK SPRING RATE CHART	2
2.6. FOX AIR SHOCK WITH SPECIALIZED GENIE TECH	2
3. GEOMETRY	3
3.1. ADJUSTABLE GEOMETRY CHANGES	5
4. SPECIFICATIONS	6
5. REAR TRIANGLE SPECIFICATIONS	9
5.1. BEARING AND SPACER SPECIFICATIONS	10
5.2. BOLT, AXLE, WASHER, AND FLIP CHIP SPECIFICATIONS	12
6. CABLE ROUTING	13
7. REPLACEMENT PARTS AND ACCESSORIES	15

SPECIALIZED BICYCLE COMPONENTS | 15130 Concord Circle, Morgan Hill, CA 95037 (408) 779-6229

0000208250_SC_R2 10/24

We may occasionally issue updates and addenda to this document. Please periodically check www.specialized.com or contact Rider Care to make sure you have the latest information. 877-808-8154

1. SYMBOLS LEGEND



WARNING! The combination of this symbol and word indicates a potentially hazardous situation that, if not avoided, could result in serious injury or death. Many of the Warnings say, "you may lose control and fall." Because any fall can result in serious injury or even death, we do not always repeat the warning of possible injury or death.



CAUTION: The combination of the safety alert symbol and the word CAUTION indicates a potentially hazardous situation that, if not avoided, may result in minor or moderate injury, or is an alert against unsafe practices.

The word CAUTION used without the safety alert symbol indicates a situation that, if not avoided, could result in serious damage to the bicycle or the voiding of your warranty.



This symbol alerts the reader to information that is particularly important.



Tech tips are useful tips and tricks regarding installation and use.



This symbol means that high-quality grease should be applied as illustrated.



This symbol means that high-quality carbon assembly paste should be applied as illustrated.



This symbol means a high-quality blue threadlocker should be applied as illustrated.



This symbol means a high-quality bearing retaining compound should be applied as illustrated.



This symbol indicates the length of time required for something to fully cure.

2. GENERAL INFORMATION

2.1. REQUIRED TOOLS

TOOL	SIZE/SPEC
Torque wrench	0 - 25 Nm / 0 - 221 in-lbf
Hex bits / sockets	2.5 mm, 3 mm, 4 mm, 6 mm, 8 mm
Torx keys	T25
Hex keys	2.5 mm, 4 mm, 5 mm
Cable / housing cutters	-
Pick set	-
High-quality grease	-
High-quality bearing retaining compound	Loctite 603
High-quality blue threadlocker	Loctite 243
High pressure shock pump	-

2.2. WEIGHT LIMITS

MODEL	CARGO WEIGHT LIMIT (kg / lb)		STRUCTURAL WEIGHT LIMIT (kg / lb)
	REAR	FRONT	
Stumpjumper Alloy	2.3 / 5	0 / 0	136 / 300

2.3. COMPONENT COMPATIBILITY

COMPONENT	COMPATIBLE SIZES/SPECS
Seat collar diameter	38.6 mm
Seatpost diameter	34.9 mm
Rear tire max	29 x 2.4 in
Bottom bracket shell	73 mm [BSA threaded]
Rear wheel travel	145 mm
Shock length / stroke	S1: 210 mm / 52.5 mm S2-6: 210 mm / 55 mm
Recommended shock sag	16 mm (30%)
Min / max fork travel	S1: 140 mm / 150 mm S2-6: 150 mm / 160 mm
Min chainring	30 t
Max chainring	34 t
Min / max front chainline	55 mm only
Chainguide tabs	ISCG-05
Min / max front rotor	Fork manufacturer's guidelines
Min / max rear rotor	S1-2: 180 mm / 220 mm S3-6: 200 mm / 220 mm
Bottle clearance	1 bottle

2.4. SEATPOST MIN / MAX INSERTION

FRAME	S1	S2	S3	S4	S5	S6
Minimum insertion (mm)	80					
Maximum insertion (mm)	245	245	255	255	285	285

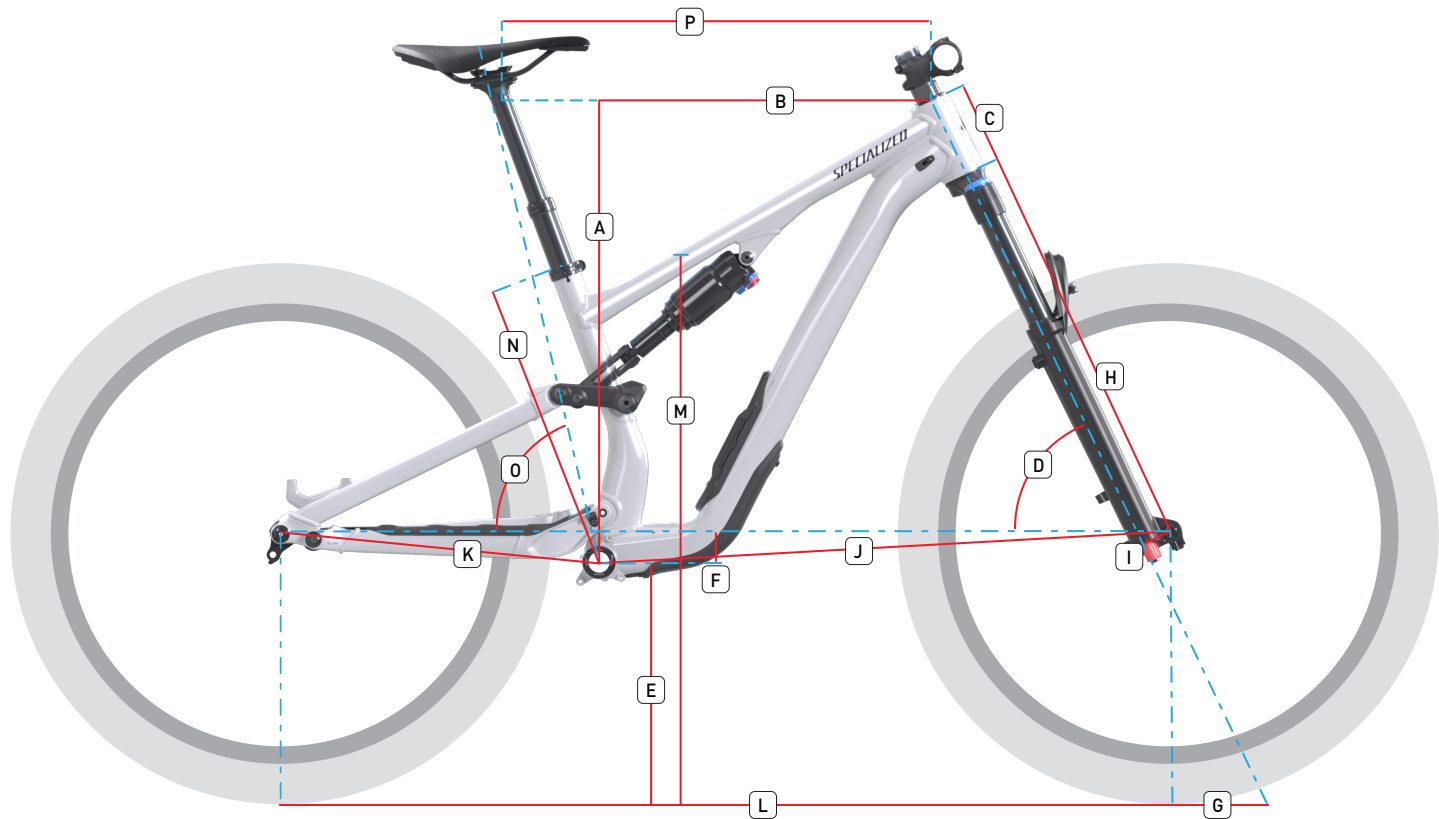
2.5. COIL SHOCK SPRING RATE CHART

RIDER WEIGHT		SPRING RATE lb
kg	lb	
41-50	90-110	250-300
54-59	120-130	300-350
63-68	140-150	350-400
73-77	160-170	400-450
82-86	180-190	450-500
91-95	200-210	500-550
100-104	220-230	550-600

2.6. FOX AIR SHOCK WITH SPECIALIZED GENIE TECH

COMPONENT	COMPATIBLE AMOUNTS/SIZES
Min / max outer sleeve spacers	0 / 4
Min / max eyelet spacer	0 / 1 (0.2 inch ³ or 0.4 in ³)

3. GEOMETRY



		STUMPJUMPER ALLOY (150 mm fork)						STUMPJUMPER ALLOY (160 mm fork)					
		S1*	S2	S3	S4	S5	S6	S1**	S2	S3	S4	S5	S6
A	Stack (mm)	608	618	627	640	654	667	–	621	630	644	657	671
B	Reach (mm)	400	425	450	475	500	530	–	420	445	470	495	525
C	Head tube length (mm)	95	100	110	125	140	155	–	100	110	125	140	155
D	Head tube angle (°)	64.5	64.5	64.5	64.5	64.5	64.5	–	64.0	64.0	64.0	64.0	64.0
E	BB height (mm)	334	337	337	337	337	337	–	340	340	340	340	340
F	BB drop (mm)	41	38	38	38	38	38	–	35	35	35	35	35
G	Trail (mm)	129	130	130	130	130	130	–	134	134	134	134	134
H	Fork length: full (mm)	551	561	561	561	561	561	–	573	573	573	573	573
I	Fork rake offset (mm)	44	44	44	44	44	44	–	44	44	44	44	44
J	Front center (mm)	720	751	780	812	843	879	–	755	785	816	848	884
K	Chainstay length (mm)	430	432	435	435	445	445	–	432	432	432	442	442
L	Wheelbase (mm)	1,149	1,181	1,213	1,244	1,285	1,322	–	1,186	1,216	1,247	1,288	1,325
M	Standover height (mm)	738	751	745	745	745	751	–	751	745	745	745	751
N	Seat tube length (mm)	385	385	405	425	445	465	–	385	405	425	445	465
O	Seat tube angle (°)	77.0	76.5	77.0	76.9	77.3	77.6	–	76.0	76.5	76.5	76.8	77.2
P	Top tube length, horizontal (mm)	541	573	595	624	647	677	–	574	596	625	649	678
	Crank length (mm)	165	165	165	170	170	170	–	165	165	170	170	170
	Handlebar width (mm)	780	780	800	800	800	800	–	780	800	800	800	800
	Saddle width (mm)	155	155	143	143	143	143	–	155	143	143	143	143

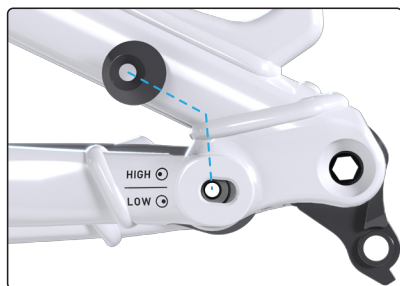
The above table shows the standard geometry for the bicycles as shipped. Visit www.specialized.com for all possible geometry configurations.

*Size S1 bicycles ship factory standard with a 140 mm travel fork. **Size S1 bicycles are not compatible with a 160 mm travel fork.

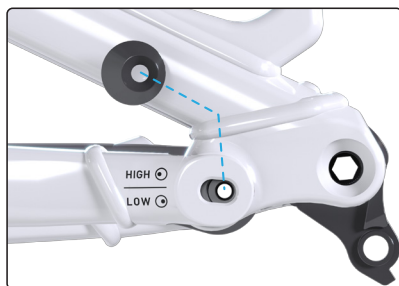


S1 and S2 bicycles are only compatible with a mixed wheel setup, S3-S6 are compatible with a 29 inch or mixed wheel setup.

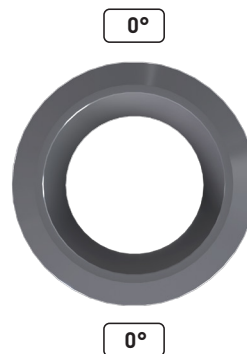
3.1. ADJUSTABLE GEOMETRY CHANGES



HIGH



LOW

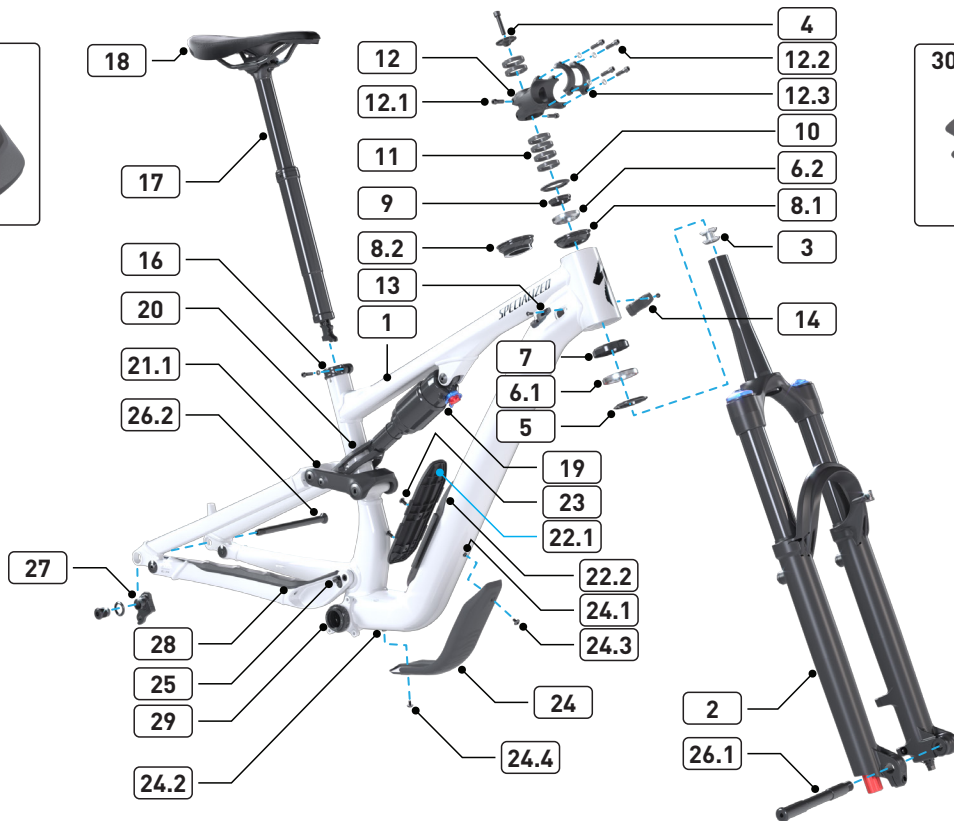


ADJUSTABLE GEOMETRY CHANGES			
ADJUSTMENT POINT	CHAINSTAY LENGTH	BOTTOM BRACKET HEIGHT	HEADTUBE ANGLE
Horst pivot (high)	+/- 0 mm	+/- 0 mm	+/- 0°
Horst pivot (low)	+ 6 mm	- 7 mm	- 0.5°
Headset cup (0°)	+/- 0 mm	+/- 0 mm	64.5°
Headset cup (-1°)	+/- 0 mm	- 2 mm	63.5°
Headset cup (+1°)	+/- 0 mm	+ 1 mm	65.5°



Your bicycle ships factory standard with the Horst pivot flip chips in high position, and a 0° headset cup installed.

4. SPECIFICATIONS



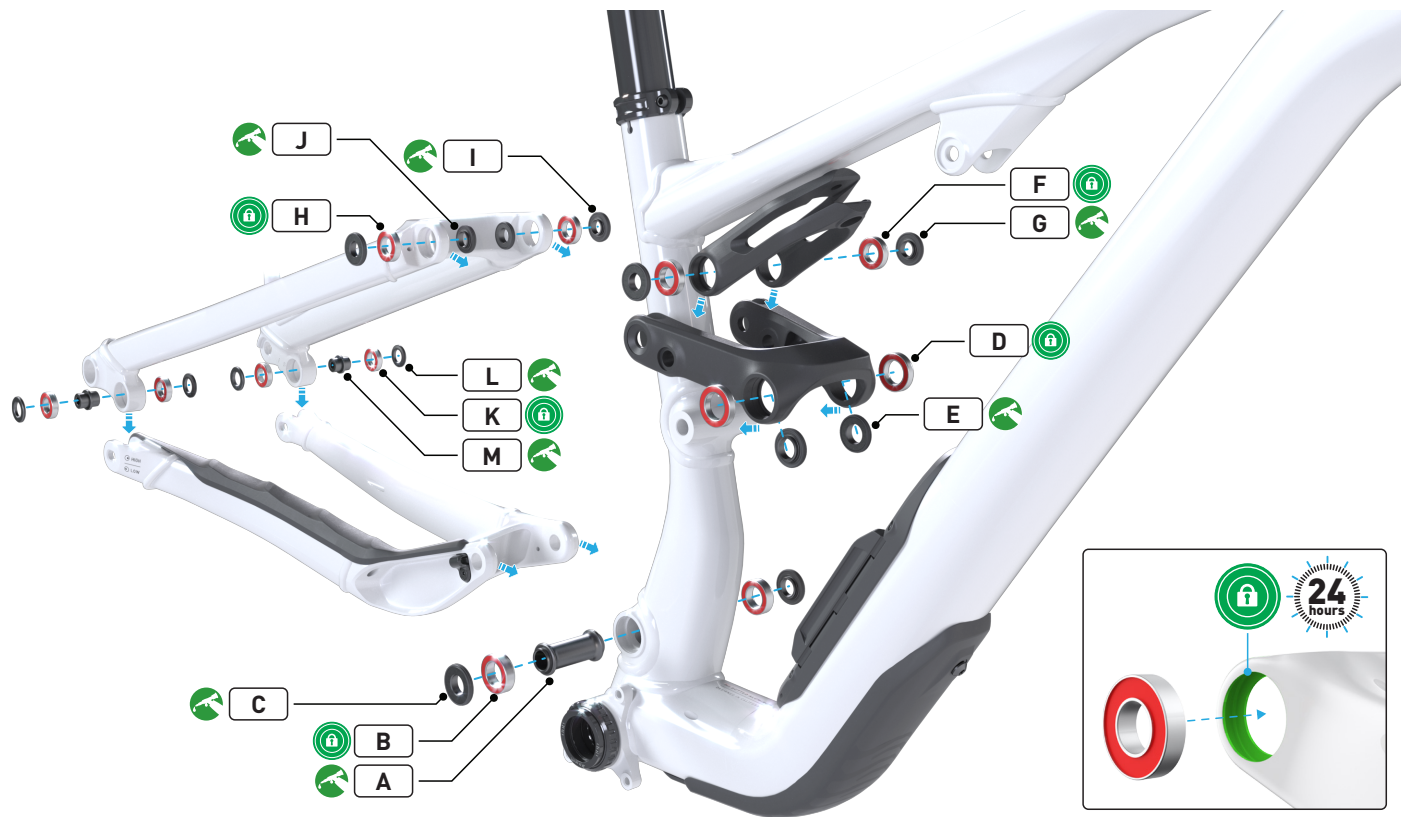
	DESCRIPTION		TOOL SIZE	TORQUE	
				Nm	in-lbf
1	Frame		-	-	-
2	Fork		-	-	-
3	Star nut		-	-	-
4	Top cap and compression bolt		4 mm hex	-	-
5	Crown race		-	-	-
6	Headset bearing	1. Lower 1.5" (52 mm OD x 40 mm ID x 7 mm, 45° x 45°)	-	-	-
		2. Upper 1-1/8" (41.8 mm OD x 30.5 mm ID x 7 mm, 45° x 45°)	-	-	-
7	Lower headset cup		-	-	-
8	Headset cups	1. [0°] headset cup	-	-	-
		2. [+/-1°] headset cup	-	-	-
9	Compression ring		-	-	-
10	Headset cover		-	-	-
11	Headset spacers (34 OD x 28.6 ID x 5 mm)		-	-	-
12	Stem	1. Steerer bolts	-	Torque to the specification stated on the stem.	
		2. Faceplate bolts	-		
		3. Faceplate	-	-	-
13	ICR guide (single cable) (drive side)		2.5 mm hex	1.5	13
14	ICR guide (double cable) (non-drive side)		2.5 mm hex	1.5	13
15	Handlebar (not shown)		-	-	-
16	Seatpost clamp (38.6 mm)		4 mm hex	6.2	55
17	Seatpost		-	-	-

18	Saddle		-	-	-
19	Shock		-	-	-
20	Shock extension		-	-	-
21	Shock link*	1. 29 inch alloy link	-	-	-
		2. 27.5 inch (mixed wheel) alloy link	-	-	-
22	SWAT 3.0	1. SWAT door	-	-	-
		2. SWAT door bezel, gasket, and pipeline kit	2.5 mm hex	0.7	6
23	Water bottle cage bolts (M5 x 16 mm x 0.8 mm)		3 mm hex	2.8	25
24	Down tube protector	1. Nut (M4 x 0.7 mm)	-	-	-
		2. Nut (M4 x 0.7 mm)	-	-	-
		3. Forward protector bolt (M4 x 0.7 mm x 7 mm)	T25 Torx	2	18
		4. Rear protector bolt (M4 x 0.7 mm x 13 mm)	T25 Torx	2	18
25	Chainstay cable guide		2.5 mm hex	1.5	13
26	Axle	1. Front axle (fork manufacturer's guidelines)	-	-	-
		2. Rear axle (12 mm x 148 mm)	6 mm hex	15	133
27	Rear derailleur hanger (SRAM UDH)		8 mm hex	25	221
28	Chainstay protector		2.5 mm hex	2	18
29	Bottom bracket		-	-	-
30	Cable binder (5 mm / 3 mm)		-	-	-

*Not all models are equipped with all the above components.

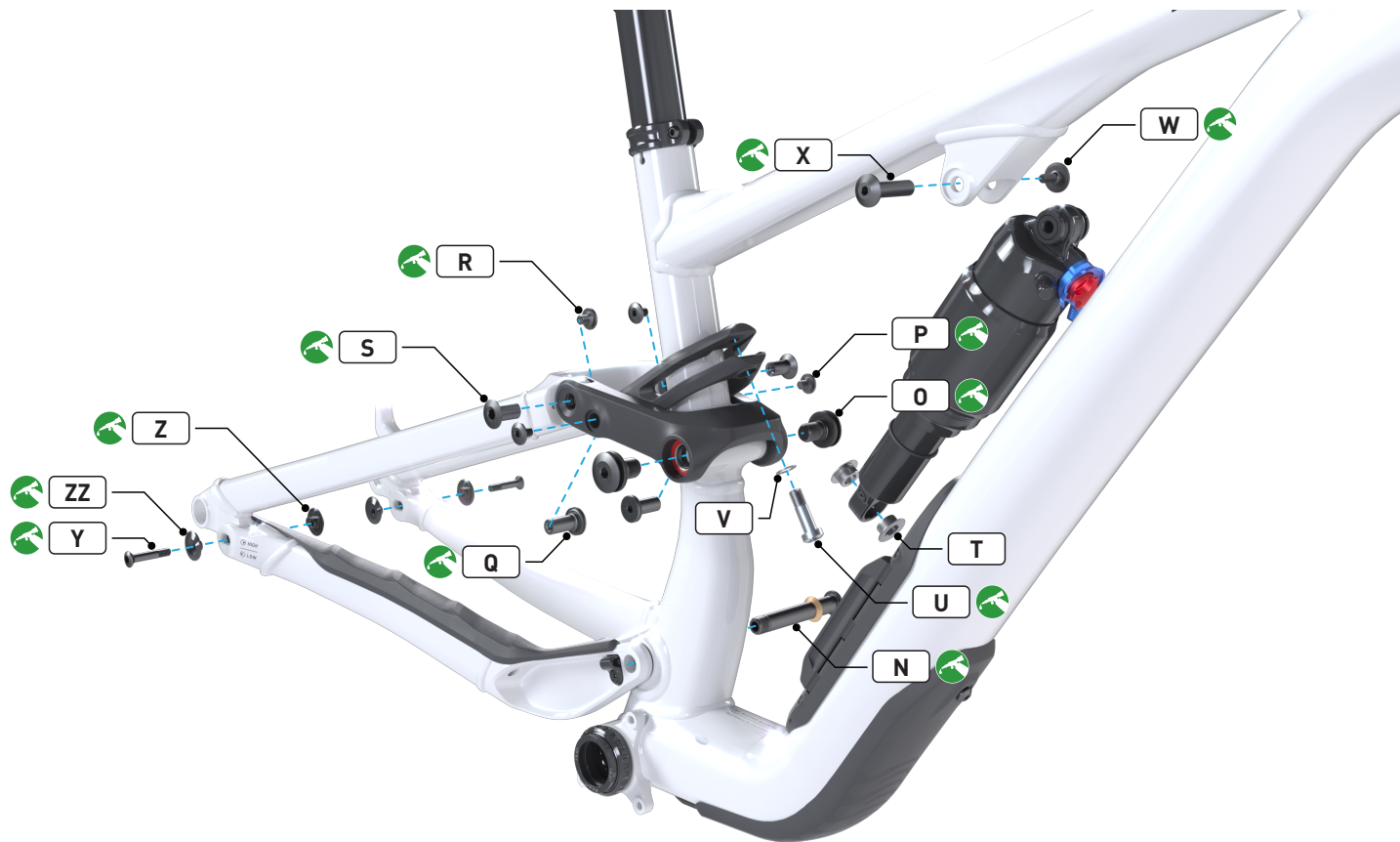
Other service parts may be found in section **7. Replacement parts and accessories**.

5. REAR TRIANGLE SPECIFICATIONS



5.1. BEARING AND SPACER SPECIFICATIONS

	LOCATION	QTY	BEARING	DIMENSION (MM)
A	Main pivot center spacer	1	-	12 ID x 20 OD x 41 W
B	Main pivot bearing	2	3802-2RS	15 ID x 24 OD x 7 W
C	Main pivot spacer	2	-	12.1 ID x 23 OD x 3 W
D	Link at seat tube bearing	2	6802-2RS	15 ID x 24 OD x 5 W
E	Link at seat tube spacer	2	-	12.1 ID x 21 OD x 3 W
F	Extension bearing	2	6801-2RS	12 ID x 21 OD x 5 W
G	Extension spacer	2	-	10 ID x 20 OD x 3 W
H	Link at seatstay bearing	2	6801-2RS	12 ID x 21 OD x 5 W
I	Link at seatstay spacer (outer)	2	-	10 ID x 20 OD x 3 W
J	Link at seatstay spacer (inner)	2	-	10 ID x 18 OD x 3 W
K	Horst pivot bearing	4	6801-2RS	12 ID x 21 OD x 5 W
L	Horst pivot spacer	4	-	12 ID x 21 OD x 2.5 W
M	Horst pivot center spacer	2	-	6 ID x 16 OD x 16 W



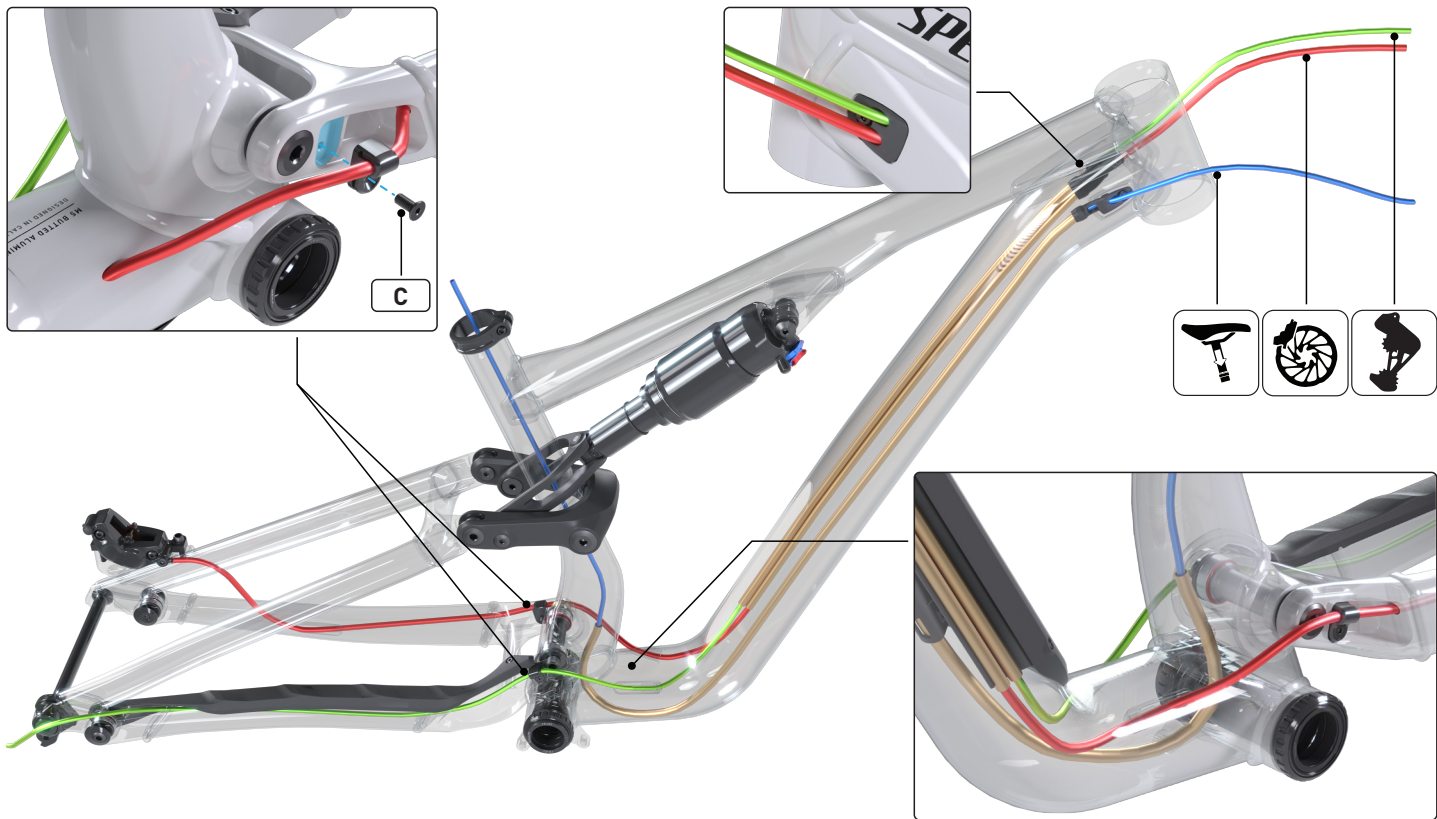
5.2. BOLT, AXLE, WASHER, AND FLIP CHIP SPECIFICATIONS

	LOCATION	QTY	DIMENSION (MM)	TOOL SIZE	TORQUE	
					Nm	in-lbf
N	Main pivot bolt	1	M12 x 1.0 x 83	6 mm hex	20	177
O	Link at seat tube bolt	2	M12 x 1.0 x 17	6 mm hex	20	177
P	Link at extension bolt	2	M6 x 1.0 x 8	4 mm hex	12	106
Q	Link at extension axle	2	10 OD x 1.0 x 23	5 mm hex	-	-
R	Link at seatstay bolt	2	M6 x 1.0 x 8	4 mm hex	12	106
S	Link at seatstay axle	2	6 OD x 1.0 x 19	6 mm hex	-	-
T	Rear shock washer	2	8.1 ID x 19 OD x 0.6	-	-	-
U	Rear shock mounting bolt	1	M8 x 1.25 x 27	6 mm hex	20	177
V	Rear shock mounting washer	1	M8, 8.4 ID x 13 OD x 0.5	-	-	-
W	Forward shock mounting bolt	1	M5 x 0.8 x 13.45	4 mm hex	5.5	49
X	Forward shock mounting axle	1	8 OD x 0.8 x 31.2	4 mm hex	-	-
Y	Horst pivot bolt	2	M6 x 1.0 x 32.5	5 mm hex	10	89
Z	Horst pivot flip chips (threaded)	2	M6 x 1.0	-	-	-
ZZ	Horst pivot flip chips (non-threaded)	2	6 ID	-	-	-

6. CABLE ROUTING



	DESCRIPTION	TOOL SIZE	TORQUE	
			Nm	in-lbf
A	ICR guide (single cable) (4mm/5mm housing) (drive side)	2.5 mm hex	1.5	13
B	ICR guide (double cable) (4mm/5mm housing) (non-drive side)	2.5 mm hex	1.5	13
C	Chainstay cable guide	2.5 mm hex	0.8	7



7. REPLACEMENT PARTS AND ACCESSORIES

	DESCRIPTION	PART
1	CABLE CLIP/BINDER FOR 5MM/3MM HOUSING	S256500001
2	ICR GUIDE WITH BOLT (SINGLE CABLE) (4MM/5MM HOUSING)	S216500010
3	ICR GUIDE WITH BOLT (DOUBLE CABLE) (4MM/5MM HOUSING)	S246500002
4	HEADSET CUPS KIT (0 DEGREE AND +/-1 DEGREE CUPS)	S212500015
5	HEADSET KIT (1-1/8" UPPER / 1.5" LOWER, 45x45 DEGREE BEARINGS) (HEADSET TOP COVER 46MM (H2387)) (SPLIT CROWN RACE)	S242500004
6	LARGE SWAT POD (270MM LENGTH)	S229900016
7	SWAT 3.0 DOOR	S219900064
8	SWAT 3.0 DOOR BEZEL AND 3 CABLE PIPELINE KIT	S249900001
9	SEATPOST CLAMP (38.6MM)	S214700007
10	SEATPOST SHIM (34.9MM OD / 30.9MM ID)	S174900001
11	REAR BOOST THRU-AXLE (12MM X 148MM)	S240200001
12	SRAM UNIVERSAL DERAILLEUR HANGER (UDH) (00.7918.089.000)	S202600002
13	BOLT KIT (REAR SHOCK MOUNTING HARDWARE)	S240500003
14	BOLT KIT (SUSPENSION PIVOT BOLTS AND SPACERS)	S240500002
15	BEARING KIT (SUSPENSION BEARINGS, HORST PIVOT SPACERS, AND CHAINSTAY MIDDLE SPACERS)	S240600002
16	ALLOY SHOCK EXTENSION	S246300001
17	29" ALLOY SHOCK LINK	S244300003
18	27.5" ALLOY SHOCK LINK	S244300001

19	SHOCK MY25 FOX, FLOAT GENIE, PERFORMANCE ELITE, 210 X 52.5MM, SJ 15 EXPERT/ELITE (SIZE S1) [972-63-264]	S244200004
20	SHOCK MY25 FOX, FLOAT GENIE, PERFORMANCE ELITE, 210 X 55MM, SJ 15 EXPERT/ELITE (SIZE S2-S6) [972-63-263]	S244200005
21	CHAINSTAY CABLE GUIDE WITH BOLT FOR 4MM/5MM HOUSING	S246500001
22	ALLOY CHAINSTAY (12MM X 148MM) (SATIN BLACK)	S241500002
23	ALLOY CHAINSTAY (12MM X 148MM) (GLOSS BLACK)	S241500001
24	MOLDED CHAINSTAY PROTECTOR WITH BOLT	S246900001
25	MOLDED DOWN TUBE PROTECTOR WITH HARDWARE	S249900012
26	SHUTTLE GUARD PROTECTOR (ADHESIVE BACKING)	S249900011
27	MYLAR DOWN TUBE PROTECTOR (SIZE S1-S2)	S249900005
28	MYLAR DOWN TUBE PROTECTOR (SIZE S3-S4)	S249900006
29	MYLAR DOWN TUBE PROTECTOR (SIZE S5-S6)	S249900007
30	ALLOY SEATSTAY FOR 27.5" WHEELS ONLY (SIZE S1-S2) (SATIN BLACK)	S245000002
31	ALLOY SEATSTAY FOR 27.5" WHEELS ONLY (SIZE S1-S2) (GLOSS BLACK)	S245000001
32	ALLOY SEATSTAY 425MM LENGTH (SIZE S3-S4) (SATIN BLACK)	S245000004
33	ALLOY SEATSTAY 425MM LENGTH (SIZE S3-S4) (GLOSS BLACK)	S245000003
34	ALLOY SEATSTAY 434MM LENGTH (SIZE S5-S6) (SATIN BLACK)	S245000006
35	ALLOY SEATSTAY 434MM LENGTH (SIZE S5-S6) (GLOSS BLACK)	S245000005

Specialized replacement parts, components, and accessories are available through your Authorized Specialized Retailer.

NOTES

SPECIALIZED®

SPECIALIZED BICYCLE COMPONENTS

15130 Concord Circle, Morgan Hill, CA 95037 (408) 779-6229