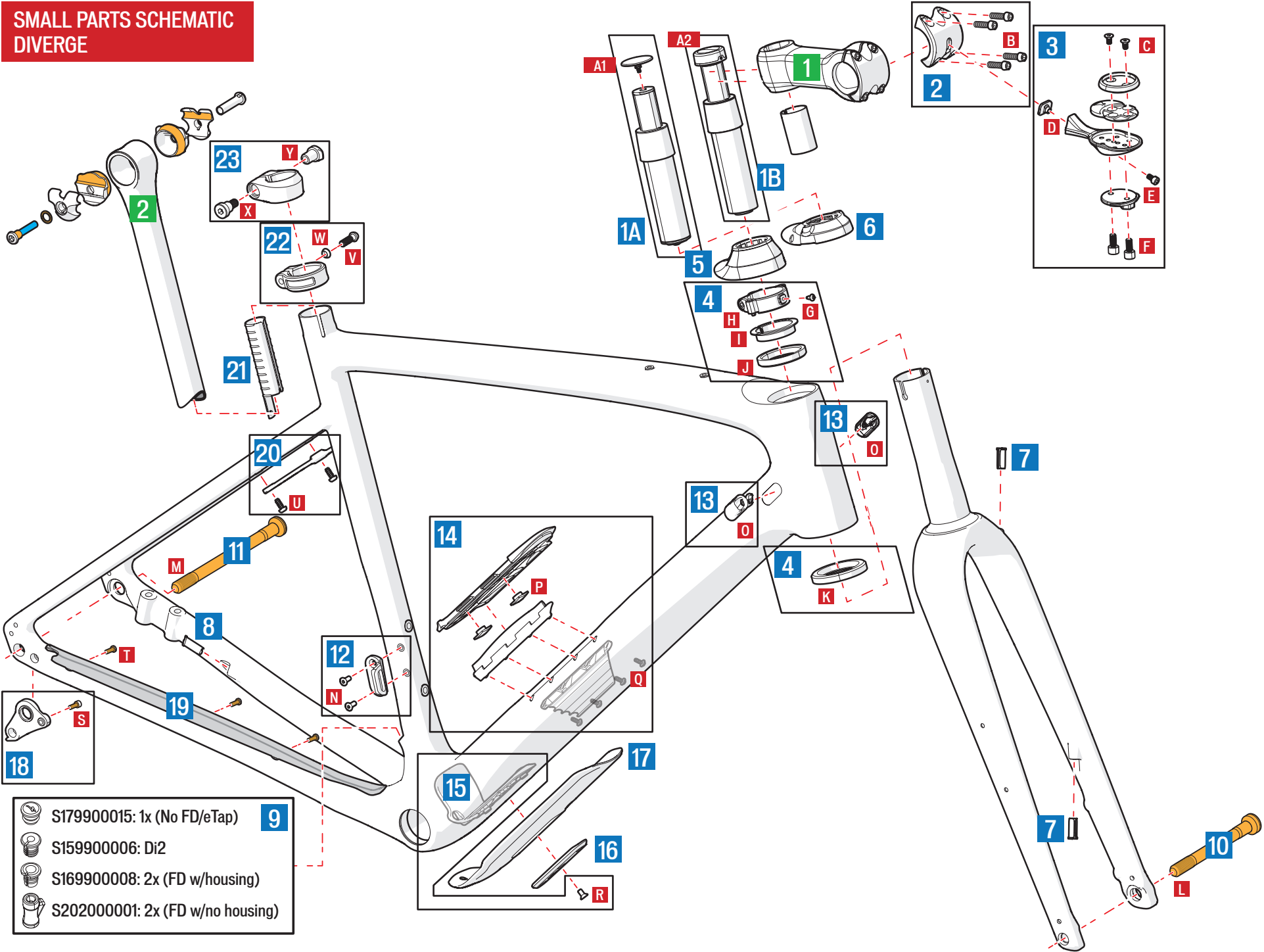






SMALL PARTS SCHEMATIC DIVERGE



-  S179900015: 1x (No FD/eTap) **9**
-  S159900006: Di2
-  S169900008: 2x (FD w/housing)
-  S202000001: 2x (FD w/no housing)

| ITEM # | ITEM | DESCRIPTION | ORACLE DESCRIPTION | SUB ITEM | QTY | DESCRIPTION | SPECIFICATION | TORQUE in-lbf/Nm |
|--------|------------|-------------------------------|---|----------|-----|---------------------|----------------------------------|------------------|
| 1A | S194200040 | FUTURE SHOCK 1.5 (Undamped)** | SUB MY20 FUTURE SHOCK CARTRIDGE 1.5,NON DAMPED,24.5MM STEM SHIM | A1 | 1 | TOP CAP | | |
| 1B | S194200039 | FUTURE SHOCK 2.0 (Damped)** | SUB MY20 FUTURE SHOCK CARTRIDGE 2.0,DAMPED,24.5MM STEM SHIM | A2 | 1 | ADJUSTER KNOB | 1.5mm Hex | 18 / 2 |
| 2 | S199900064 | STEM FACEPLATE | MSC STEM D1.1 FUTURE STEM,ROAD,FACE PLATE,ACCESSORY MOUNT COMPATIBLE | B | 1 | FACEPLATE BOLTS | M5 x 15, 4mm Hex | 45 / 5.1 |
| 3 | S189900104 | ACCESSORY MOUNT KIT | MSC MY19 VENGE ACCESSORY MOUNT KIT (COMPATIBLE W/ BRYTON, CAT EYE, GOPRO, JOULE, MIO, POLAR & WAHOO) | C | 2 | DISPLAY PUCK BOLTS | M4 x 8, 2.5mm Hex | 9.0 / 1.0 |
| | | | | D | 1 | MOUNT NUT | M4 x 16 L x 12 W x 6.5 H | |
| | | | | E | 1 | MOUNT BOLT | M4 x 7, 3mm Hex | 24 / 2.7 |
| | | | | F | 2 | CAMERA/LIGHT BOLTS | M4 x 7, 3mm Hex | 9.0 / 1.0 |
| 4 | S192500009 | HEADSET** | HDS MY20 ROUBAIX UPPER&LOWER BEARINGS, COMPRESSION RING, COLLAR & SPACERS (AVAILABLE SEPARATELY: S192500018 HDS MY20 COLLAR,HS,FORK STEER-ER,CARTRIDGE) | G | 1 | COLLAR LOCATOR BOLT | M3 x 4.5, 2.5mm Hex | 9.0 / 1.0 |
| | | | | H | 1 | COLLAR CLAMP BOLT | M5 x 18, 4mm Hex | 35 / 4.0 |
| | | | | I | 1 | COMPRESSION RING | 44.75 OD x 34.3 ID x 8.5 H | |
| | | | | J | 1 | UPPER BEARING | 45.8 OD x 36.8 ID x 6.5 H | |
| | | | | K | 1 | LOWER BEARING | 52 OD x 40 ID x 7 H | |
| 5 | S192500010 | HEADSET CAP (15mm)** | HDS MY20 ROUBAIX HEADSET CAP ,15MM,ROAD,END HT G2,NYLON | | 1 | | | |
| 6 | S192500011 | HEADSET CAP (0mm)** | HDS MY20 ROUBAIX HEADSET CAP ,0MM,ROAD,END HT G2,NYLON | | 1 | | | |
| 7 | S179900014 | GROMMET | MSC MY17 ROUBAIX 7.5MM FLAT ICR GROMMET | | 2 | | | |
| 8 | S179900013 | GROMMET | MSC MY17 ROUBAIX / VENGE VIAS 7.5MM ANGLED ICR GROMMET | | 1 | | | |
| 9 | S179900015 | GROMMET | MSC ROAD 7MM WIRELESS PLUG W/ S LOGO FOR FD AND RD HOLE | | 1 | | | |
| | S159900006 | | MSC MY15 TARMAC MY16 VENGE VIAS DROPOUT EXIT FRAME PLUG FOR DI2 WIRE | | 1 | | | |
| | S169900008 | | MSC MY16 VENGE VIAS REAR DER PLUG FOR MECHANICAL SHIFTING | | 1 | | | |
| | S202000001 | | CBS MY21 DIVERGE FD CABLE STOP | | 1 | | | |
| 10 | S180200004 | FRONT THRU AXLE* | AXL FRONT THRU AXLE, 100MM SPACING,127.5MM LENGTH, 12MM THROUGH TYPE | L | 1 | FRONT AXLE | 100mm axle: M12 x 127.5, 6mm Hex | 133 / 15.0 |
| 11 | S180200005 | REAR THRU AXLE* | AXL REAR THRU AXLE, 142MM SPACING,168MM LENGTH, 12MM THROUGH TYPE | M | 1 | REAR AXLE | 142mm axle: M12 x 168, 6mm Hex | 133 / 15.0 |
| 12 | S201900001 | FRONT DERAILLEUR HANGER* | DER MY21 DIVERGE FRONT DERAILLEUR MOUNT KIT | N | 1 | HANGER BOLTS | M4 x 10mm, 2.5mm Hex | 18 / 2.0 |
| 13 | S209900020 | ICR PORT KIT | MSC MY21 DIVERGE ICR PORT KIT | O | 2 | ICR BOLTS | M3 x 12mm, 2.5mm Hex | 7 / 0.8 |
| 14 | S209900021 | SWAT DOOR KIT*** | MSC MY21 SWAT 2.0 KIT | P | 2 | BOTTLE BOLT INSERTS | M5 x 6mm, square head | 25 / 2.8 |
| | | | | Q | 4 | PIPELINE SCREWS | M2 x 8mm, T10 Torx | 0.5 / 0.06 |
| 15 | S209900017 | BULKHEAD KIT*** | MSC MY21 DIVERGE DT BULKHEAD | R | 1 | BULKHEAD SCREW | M4 x 8mm, 3mm Hex | 7 / 0.8 |
| 16 | S209900016 | BULKHEAD SPACER* | MSC MY21 DIVERGE BULKHEAD DT SPACER | | 1 | | | |
| 17 | S209900018 | DOWN TUBE PROTECTOR* | MSC MY21 DIVERGE DT PROTECTOR | | 1 | | | |
| 18 | S182600001 | DERAILLEUR HANGER* | HGR MY18 ROAD DISC THRU AXLE DER HANGER | S | 1 | HANGER BOLT | M5 x 10, 4mm Hex | 40 / 4.5 |
| 19 | S206900002 | CHAINSTAY PROTECTOR (CARBON) | CSP MY21 DIVERGE CHS PROTECTOR KIT | T | 3 | CHAINSTAY BOLTS | M4 x 9mm, 2mm Hex | 7 / 0.8 |
| | S206900001 | CHAINSTAY PROTECTOR (ALLOY)* | CSP CHAINSTAY PROTECTOR SCT-49004 | | 1 | | | |
| 20 | S209900019 | FENDER BRIDGE KIT | MSC MY21 DIVERGE FENDER BRIDGE | U | 2 | FENDER BRIDGE BOLTS | M3 x 10mm, 3mm Hex | 27 / 3.0 |
| 21 | S209900014 | DI2 BATTERY HOLDER* | MSC BATTERY HOLDER,MY21 DIVERGE SEAT POST | | 1 | | | |
| 22 | S194700002 | STANDARD SEAT COLLAR* | STC KCNC, SPL-SC02-308, ECTRUDED, 7075-T6, 30.8MM, STAINLESS STEEL | V | 1 | SEAT COLLAR BOLT | M5 x 22, 4mm Hex | 55 / 6.2 |
| | | | | W | 1 | CONVEX (CUP) SPACER | 7.9 OD X 5.1 ID X 2.5 H | |
| 23 | S204700001 | RACK MOUNT SEAT COLLAR* | STC ASSY,ROAD,END HT I1,ALY | X | 1 | SEAT COLLAR BOLT | M7 x 19mm, 5mm Hex | 55 / 6.2 |
| | | | | Y | 1 | SEAT COLLAR NUT | M7 x 10mm OD x 12mm | |

FORKS

| ITEM | DESCRIPTION | ORACLE DESCRIPTION |
|------------|-------------|--|
| S202300006 | FORK | FRK DIVERGE CARBON, STN CARB, ABFF-19, CRBN,55 OFFSET,114 ST,SIZE 49 |
| S202300007 | | FRK DIVERGE CARBON, STN CARB, ABFF-19, CRBN,55 OFFSET,119 ST,SIZE 52 |
| S202300008 | | FRK DIVERGE CARBON, STN CARB, ABFF-19, CRBN,55 OFFSET,148 ST,SIZE 56 |
| S202300009 | | FRK DIVERGE CARBON, STN CARB, ABFF-19, CRBN,55 OFFSET,174 ST,SIZE 58 |
| S202300010 | | FRK DIVERGE CARBON, STN CARB, ABFF-19, CRBN,55 OFFSET,200 ST,SIZE 61 |
| S202300011 | | FRK DIVERGE CARBON, STN CARB, ABFF-19, CRBN,55 OFFSET,131 ST,SIZE 54 |
| S202300012 | | FRK DIVERGE CARBON, STN CARB, ABFF-19, CRBN,55 OFFSET,224 ST,SIZE 64 |
| S202300013 | | FRK DIVERGE E5, STN CARB, ABFF-21(NFS), CRBN,55 OFFSET,300 ST |

AFTERMARKET ITEMS:

| ITEM # | PART # | ITEM | DESCRIPTION |
|--------|------------|----------|---|
| 1 | 20020-1701 | STEM** | SW FUTURE STEM BLK 31.8X70 6D |
| | 20020-1702 | | SW FUTURE STEM BLK 31.8X80 6D |
| | 20020-1703 | | SW FUTURE STEM BLK 31.8X90 6D |
| | 20020-1704 | | SW FUTURE STEM BLK 31.8X100 6D |
| | 20020-1705 | | SW FUTURE STEM BLK 31.8X110 6D |
| | 20020-1706 | | SW FUTURE STEM BLK 31.8X120 6D |
| | 20020-1707 | | SW FUTURE STEM BLK 31.8X130 6D |
| 2 | 28121-3800 | SEATPOST | ROVAL TERRA CARBON POST 330MM 0 OFFSET |
| | 28121-3805 | | ROVAL TERRA CARBON POST 330MM 20 OFFSET |
| | 28121-3810 | | ROVAL TERRA CARBON POST 380MM 0 OFFSET |
| | 28121-3815 | | ROVAL TERRA CARBON POST 380MM 20 OFFSET |

ITEMS NOT SHOWN:

| ITEM | DESCRIPTION | ORACLE DESCRIPTION |
|------------|----------------------------------|--|
| S199900020 | FUTURE SHOCK 2.0 ADJUSTER KNOB** | MSC MY20 KNOB,ADJUSTER,THRU DAMPER |
| S199900020 | FRONT THRU AXLE* | AXL DT SWISS FRONT THRU AXLE 100MM X 12MM (RWS-10) (HWQXXX00S6708C) |
| S209900002 | FUTURE SHOCK BOOT** | MSC BOOT,STRAIGHT,CARTRIDGE 1.5, NEW |
| S160200001 | FRONT THRU AXLE* | AXL DT SWISS FRONT THRU AXLE 100MM X 12MM (RWS-10) (HWQXXX00S6708C) |
| S170200002 | REAR THRU AXLE* | AXL MY17 DT SWISS RWS ROAD THRU AXLE REAR WITH ROAD HANDLE 142MM X 12MM (HWQXXX00S9128C) |
| S199900023 | 1 1/8" STEM SHIM** | MSC FUTURE SHOCK 1.5 & 2.0 STEM SHIM, 22.025ID X 28.70D (1-1/8" STEM) |
| S195300002 | HEADSET ADJUSTMENT TOOL** | TOL 3MM HEX OPEN WRENCH WITH SCR,CUST,HEX HD SET,M5X0.8X4.45,316,SST |
| S209900013 | RATTLE PREVENTION SLEEVES | MSC ABRASION RESISTANT CABLE SLEEVE, SH507AM, ID 8MM x 200MM (10PCS/BAG) |
| S209900022 | PLASTIC PLUGS | MSC RUBBER/PLASTIC PLUGS FOR TT AND FORK MOUNTING POINTS (8PCS/BAG) |

* Compatible with both carbon and alloy frames

** Compatible with Future Shock equipped frame/fork only

*** Compatible with SWAT equipped Diverge bikes only