

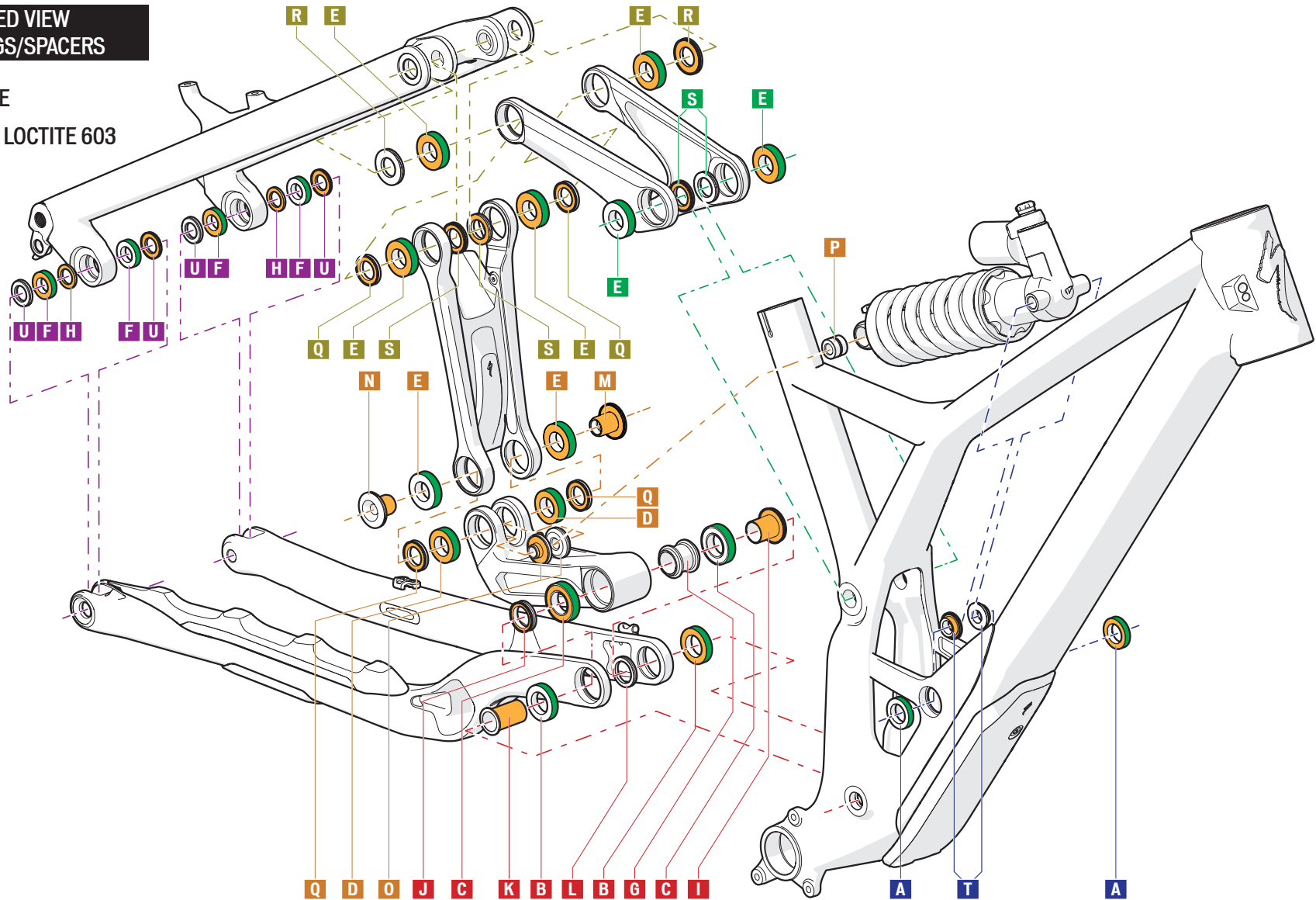
PIVOT PARTS SCHEMATIC DEMO



EXPLODED VIEW BEARINGS/SPACERS

GREASE

GREEN LOCTITE 603



PIVOT PARTS SCHEMATIC

DEMO



#	KIT	PIVOT	PART	QTY	MATERIAL	Ø OD	Ø ID	WIDTH	THREAD	LENGTH	TOOL	TORQUE (in-lbf / Nm)	COMMENTS
A	1	FORWARD SHOCK EYE	BEARING (6802V-2RS)	2	Steel	24	15	5					Full complement bearing
B		MAIN (Chainstay)	BEARING (17286V-2RS)	2	Steel	28	17	6					Full complement bearing
C		MAIN (Lower Link)	BEARING (6903V-2RS)	2	Steel	30	17	7					Full complement bearing
D		LOWER LINK @ MID LINK	BEARING (15267V-2RS)	2	Steel	26	15	7					Full complement bearing
E		MID LINK @ LOWER LINK	BEARING (6902V-2RS)	2	Steel	28	15	7					Full complement bearing
E		UPPER LINK @ SEAT TUBE	BEARING (6902V-2RS)	2	Steel	28	15	7					Full complement bearing
E		MID LINK @ SEATSTAY	BEARING (6902V-2RS)	2	Steel	28	15	7					Full complement bearing
E		UPPER LINK @ SEATSTAY	BEARING (6902V-2RS)	2	Steel	28	15	7					Full complement bearing
F		DROPOUT (Horst Link)	BEARING (6801V-2RS)	4	Steel	21	12	5					Full complement bearing

#	KIT	PIVOT	PART	QTY	MATERIAL	Ø OD	Ø ID	WIDTH	THREAD	LENGTH	TOOL	TORQUE (in-lbf / Nm)	COMMENTS
G	2	LOWER LINK	INNER SLEEVE	1	ALLOY	25	17			24			Between bearings
H		DROPOUT (Horst Link)	INNER SPACER	2	ALLOY	18	12	2					Between bearings
I		MAIN	NON-DRIVE SIDE SLEEVE	1	ALLOY	17	15.1			18.5			Seal against bearing
J			DRIVE SIDE SPACER	1	ALLOY	23	17.1	4.5					Seal against both bearings
K	DRIVE SIDE SLEEVE		1	ALLOY	17	15.1			29				
L		NON-DRIVE SIDE SPACER	1	ALLOY	23.5	17.1	3					Seals against bearing	
M	2, 3	MID LINK @ LOWER LINK	NON-DRIVE SIDE AXLE	1	ALLOY	15			M8	16.5			Female threads
N			DRIVE SIDE AXLE	1	ALLOY	15	8.2			16.5			Seal against bearing
O			INNER SHOCK SPACERS	2	ALLOY	23.5	8.1			6			Seal against bearing
P			REAR SHOCK EYE SLEEVE	1	ALLOY	15	8.1	12.5					Seal against bearing
Q			INNER SPACER	2	ALLOY	21.1	15	3					Seal against both bearings
Q	2	MID LINK @ UPPER LINK	INNER SPACER	2	ALLOY	21.1	15	3				Seal against both bearings	
R	2	UPPER LINK @ SEATSTAY	OUTER SPACER	2	ALLOY	27.4	15.1	3					Seal against bearing
S			INNER SPACER	2	ALLOY	23.5	15.1	3					Seal against bearing
S		UPPER LINK @ SEAT TUBE	SPACER	2	ALLOY	23.5	15.1	3				Seal against bearing	
T	2, 3	FORWARD SHOCK EYE	SPACER	2	ALLOY	15	10			4.5			Seal against bearing
U	2	DROPOUT (Horst Link)	OUTER SPACER	4	ALLOY	20	12.1	2.5					Seal against bearing



Grease all bearing surfaces before placing the spacers against the bearings. This helps keep the spacers in place when assembling each pivot. Always place the smaller (tapered) surface against the bearing, and the wider surface against the frame or stay.

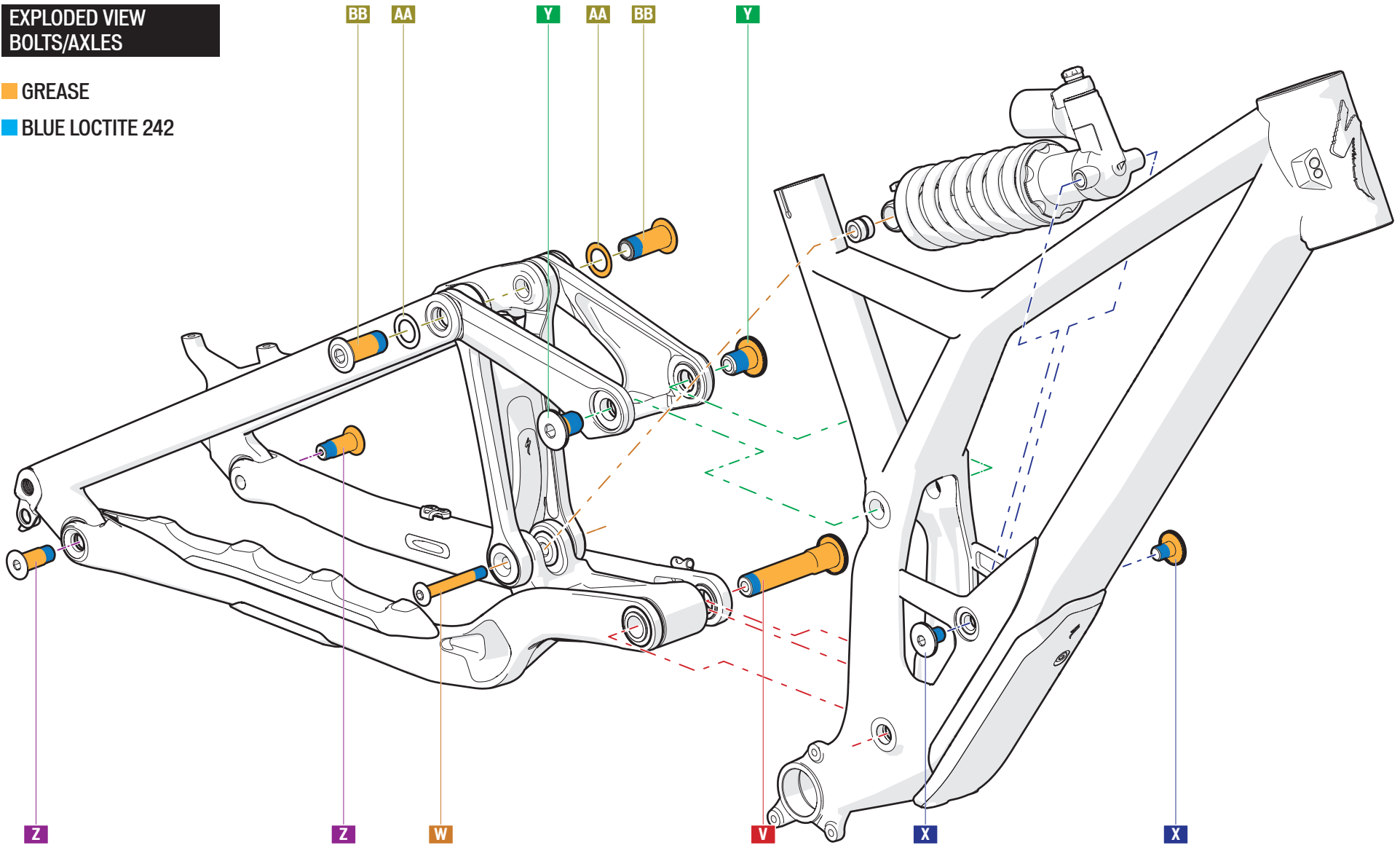
PIVOT PARTS SCHEMATIC DEMO



EXPLODED VIEW
BOLTS/AXLES

GREASE

BLUE LOCTITE 242



PIVOT PARTS SCHEMATIC

DEMO



#	KIT	PIVOT	PART	QTY	MATERIAL	Ø OD	Ø ID	WIDTH	THREAD	LENGTH	TOOL	TORQUE (in-lbf / N*m)	COMMENTS
V	2	MAIN	AXLE	1	STEEL	17 / 15			M15	80.3	8mm HEX	240 / 27.1	
W	2, 3	LOWER LINK @ MID LINK	BOLT	1	ALLOY				M8	53	6mm HEX	200 / 22.6	Mating axle - 8mm HEX
X		FORWARD SHOCK EYE	BOLT	1	ALLOY				M10	15	8mm HEX	180 / 20.3	
Y	2	UPPER LINK @ SEAT TUBE	BOLT	2	ALLOY				M15	21	8mm HEX	200 / 22.6	
Z		DROPOUT (Horst Link)	BOLT	1	ALLOY	12			M11	30	6mm HEX	180 / 20.3	
AA		UPPER LINK @ SEATSTAY	WASHER	2	STEEL	24	15.5	0.3					
BB	BOLT		2	ALLOY				M15	35.7	8mm HEX	200 / 22.6		

SERVICE KIT PART #	DESCRIPTION	KIT #
S190600002	DEMO BEARING KIT	1
S190500002	DEMO BOLT KIT	2
S194200023	DEMO SHOCK HARDWARE KIT	3



PIVOT BOLTS: All pivot bolts are factory treated with a one-time use Loctite Dryloc thread coating. If the bolts are removed for maintenance, either clean and apply a new coat of Loctite blue 242 threadlocker, or install new bolts. Only apply grease to the unthreaded portion of the bolt shaft and the inner bolt head surface. Do NOT grease the threads.



For best alignment results, do not torque any of the rear triangle pivot and shock bolts until the rear triangle is fully assembled to the front triangle.

